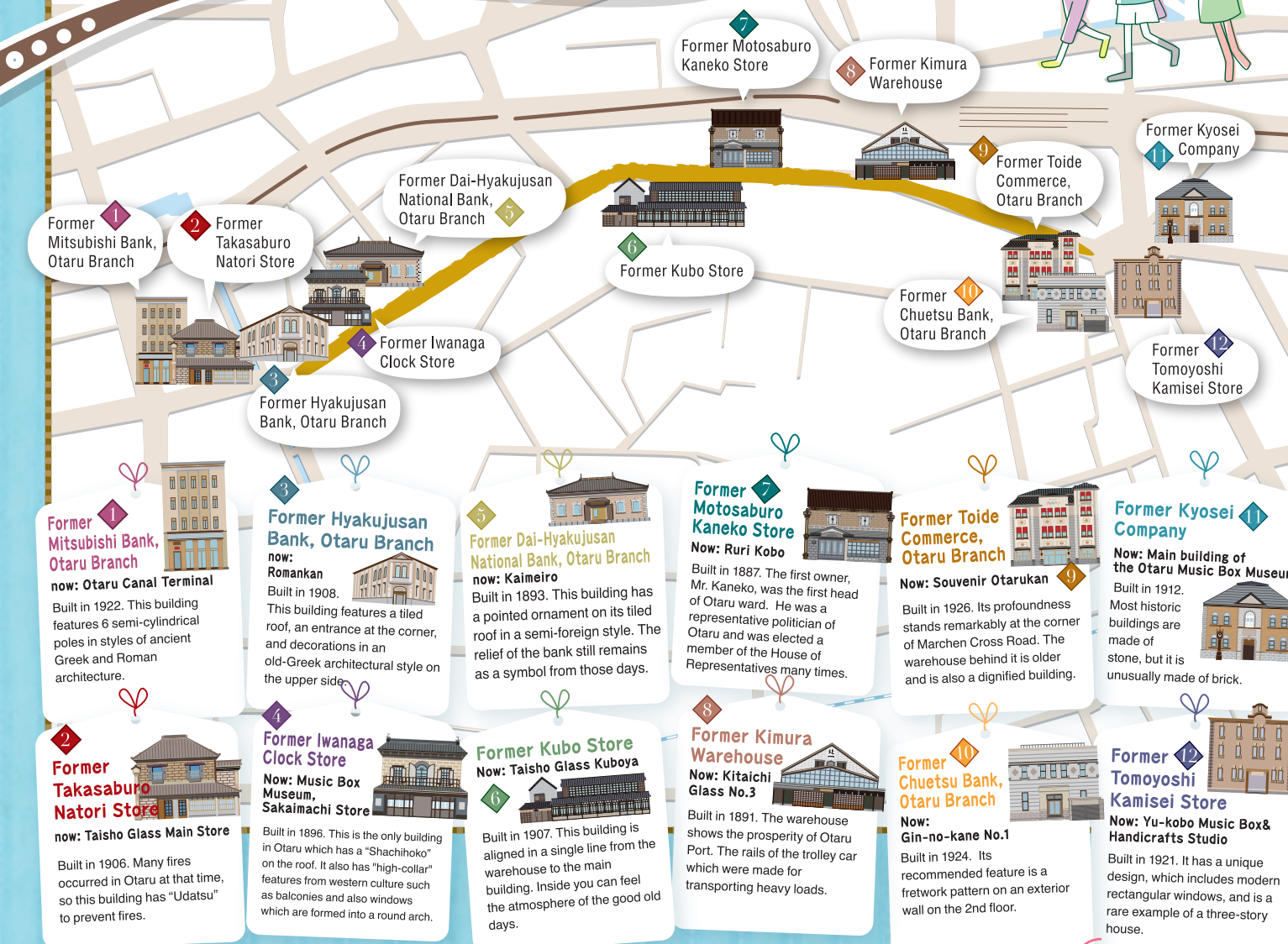


Recommended  
places for  
photographs!

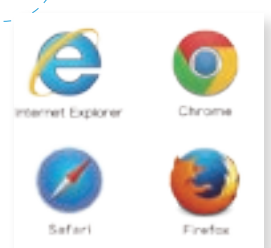
# Sparkling Sakaimachidori Historical Buildings



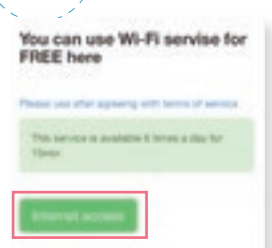
## Anybody can use Wi-Fi in Sakaimachidori Shopping Street How to use "Otaru Wi-Fi"

Please connect to  
**.Otaru\_Free\_Wi-Fi**  
right now!!

- STEP 01** Please connect to the Wi-Fi network → **STEP 02** Open your Internet browser. → **STEP 03** Please enter your language, sex and birthday. → **STEP 04** Connect to the Internet.



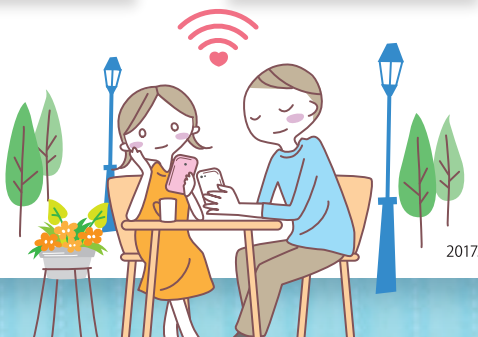
※You can't use your smart phone apps.



You can see a lot of valuable information from each store on the home screen after connecting.

12 languages are available

\*There may be some cases when you cannot connect to the Internet due to your location or being indoors.



2017.01

Everybody Loves

# Sakaimachi

Romantic Merchen Road



You can use the internet anytime!!

Tourist Information and free Wi-Fi in Sakaimachidori!!

12 languages are available



※Image is for illustration purposes.





# Everybody Loves Wi-Fi map

You can use Free Wi-Fi in  area!!

## Legend

- Eating
- Shopping
- Bus stops
- Parking
- Post offices
- Banks
- Gas stations
- Convenience stores
- Toilets
- Hotels
- Shelter
- Photo Spots

↑ to Otaru I.C.

Approx. 7 minutes  
on foot from  
Sakaimachi Street

Main Building of the Otaru  
Music Box Museum  
Yume no Oto  
Character House

Sanbongi Steep Slope  
Marchen Crossroads

Taisho Glass  
Gallery Kura

You-Kobo Music Box &  
Handicrafts Studio  
Gin-no-Kane No.1 Store

Souvenir Otarukan

Sakaimachi Post Office

Otaru Music Box Museum No.2  
Antique Museum  
LeTAO Cheese Cake Lab

**Sakaimachi Shopping  
Street Tourist Information Center**  
Taisho Glass Sakaimachi Store  
Otaru Fukuro

Ikatarou Honpo  
Creative Japanese Goods Fuyusha/Bushokan

Terakoya Honpo  
Yuzen Chopstick Store  
LeTAO Le Chocolat

Zangi Ichi  
Otaruya No.4 Store  
ROP

Taisho Glass Hokkoryia  
Misora Ramen  
Gaijinaka Shrine

Kaisendon-ya Poseidon

Sugi Yohoen  
Taisho Glass Kanzashiya  
3 Ring

Rishirya Minoya Main Store

Iso Sushi

Takeno Sushi  
Otaru Ezoya

Rishirya Minoya Taisho Kubu Store  
Ishi-no-Kura

Uroko-Tei Restaurant  
Mizubasho Handmade  
Bag Specialist Store

Eiroku Sushi

Ramen Rikyu-Tei  
Sushi-dokoro Saikou  
Morikawa Sangyo

Taisho Glass Utsuwaya

Sushiyadori Street

to Mt. Tengu  
→

Nichigindori Street  
(Northern Wall Street)

Otaru Museum of  
Literature & Art

JR Otaru Station

↑ Otaru Ferry  
Terminal

Nissan Otaru

LeTAO Main Store  
Nittoh Memorial Garden

Kitaichi Glass No.3

Rinkosen Street

Terakoya Kirara  
LeTAO Pathos  
LeTAO Plus

San-uroko Shokai  
Kaisendon En  
Fuku Sushi

Kitaichi Venetian Art Museum  
Kobushiya Otaru  
Souvenir Shop

Kahisakan Coffee Shop

Ruri-Kobo  
Fuji Sushi  
Souvenir Gallery Otaru

Tatsumi Sushi  
Otaruya No.1 Store

Hokuren Fudokan

Kamaei Factory Store  
PAW PADS  
Oreno Genghis Kahn  
Hikozou

Donburi-chaya

Antique Shop Shichifuku  
Kimono Tsujichu  
Hata-Ito

Rishirya-Minoya Furokan  
Taisho Glass Sora

Ruri-Kobo Canal Store

Romankan

Okobachi River

Taisho Glass Lamp Bead Studio  
Taisho Glass Beads Studio  
Taisho Glass Main Store

(Genghis Kahn Club)  
Kita-Togarashi  
Nikka Bar Rita  
Amato Canal Store  
Bakudan-Yaki  
Honpo

Naruto-ya Denuki-koji  
Asakusa Bridge  
Information Center

Rickshaw Ebisuya Otaru

**Sakaimachidori  
Shopping Street  
Tourist Information Center**  
We can take care of anything  
regarding your trip!

Otaru Canal  
to North Canal  
↓ Shukutsu

JR Otaru Station

Everybody Loves Sakaimachi  
Street Promotion Association